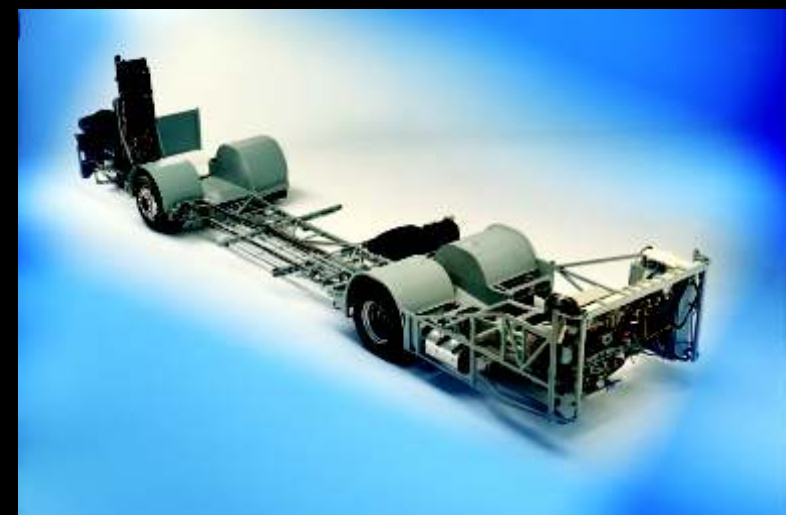




MAN-cats[®] II SERVICE AND DIAGNOSIS SYSTEM



MAN-cats[®] II

Features



Features

MAN-cats[®] II is an external diagnosis system with the most extensive test depth for electrical systems in MAN commercial vehicles.

This diagnosis system is ideally suited to use in a workshop as well as mobile usage.

MAN-cats[®] II is portable and robust. It enables workshops especially smaller ones - to inexpensively keep up with the new Trucknology[®] technology in the vehicles.

The main components are a service computer, the communication interface and well as MAN-cats[®] II software.

The modem or ethernet interface integrated in the Service Computer enables a direct online link to the central MAN-cats[®] data server.

General

- Light and compact diagnosis tools for vehicles, bus chassis and stationary engines with Trucknology[®] technology
- Independent thanks to wireless communication¹ between service computer and communication interface (range to 200 metres)
- Regular software updates via CD ROM and data transfer
- Software available in over 20 languages
- Support by MAN-cats[®] user service hotline
- Connection for printer

Vehicle diagnosis

- Control unit identification
- Read out, evaluate and delete diagnostic memory
- Actuator test (active triggering of actuators)
- Monitoring (visualisation and evaluation of current sensor signals)
- General circuit diagrams of systems retrievable

Miscellaneous

- HD-OBD scantool (from approx. Mid-2004) Heavy Duty On Board Diagnosis, read-out of data relevant to exhaust gas

Optional

- Can be expanded with additional software modules

¹ For options see extent of delivery

MAN-cats[®] II

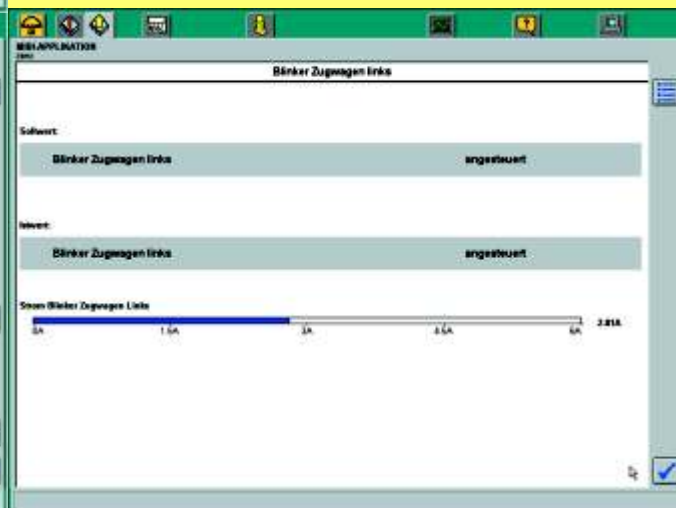
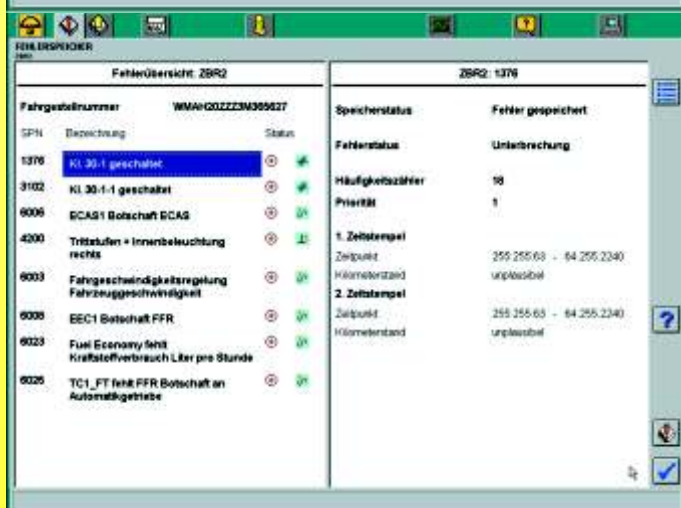
In use

Examples of diagnosable systems

- Electronic brake systems (EBS)
- Electronically controlled air suspension (ECAS)
- Engine regulation (EDC)
- Retarder
- Gearbox
- Air-conditioning systems
- Central computer
- Instrumentation
- Door module
- Airbag
- and much more

Possibilities of use

- Simple testing of actuators
- Visualisation and assessment of current sensor signals
- Identification of control unit in assembled condition
- Depiction of all stored diagnosis entries
- Fast orientation on vehicle by means of integrated overview wiring diagrams
- HD-OBd scantool (Heavy Duty On Board Diagnosis), read-out and presentation of data relevant to exhaust gas



MAN-cats[®] II Operation

Usage

The full MAN-cats[®] II system is delivered in a case. This is devised in such a way that the upper half of the case can be lifted off. The service computer can stay in the lower half of the case whilst MAN-cats[®] II is being used, hence protecting it from external mechanical influence.

The MAN-cats[®] II software automatically starts when the service computer is turned on and started up.

The system is ready to cater for a diagnosis session once the communication interface has been connected to the diagnosis socket. Communication between the service computer and vehicle is wireless¹.

Adjustments which the user must enter manually are reduced to a minimum so that he can concentrate entirely on the diagnosis of the vehicle. All adjustments specific to the workshop are summarised on one diskette, the so-called key disk.

No difficult adjustments for transmitting data over long distances are therefore required.

Software handling is carried out via keyboard or integrated touchpad making it child's play.

The self-explanatory menu is devised in such a way that computer novices can easily follow it.

Operations

- Operations in MAN-cats[®] II case possible.
- Voltage supply of service computer via accumulator, network device or vehicle adapter.
- Service with keyboard, touchpad

Software

- Configuration data stored on key disk, manual adjustments not necessary.
- Long-distance data transmission
- Software update via CD-ROM and long-distance data transmission
- System reproduction with recovery CD



¹ For options see extent of delivery

MAN-cats® II

Scope of delivery

Scope of delivery

The extent of delivery of a MAN-cats® II system comprises the following components:

- | | | | |
|---|--|----|---|
| 1 | MAN-cats® II case with 2 keys | 7 | Communication Interface |
| 2 | Service computer with MAN-cats® II software installed | 8 | Communication card |
| | (Note! The installation of software from other manufacturers is not possible!) | 9 | Modem / ISDN card with connection cable |
| 3 | Keyboard foil | 10 | Adapter cable 12 to 37-pole |
| 4 | Vehicle adapter | 11 | Recovery CD |
| 5 | Power pack | 12 | Service CD |
| 6 | Network cable | 13 | Key disk |
| | | 14 | User's manual |

¹If no radio license is available a cable communication interface will be delivered



MAN-cats[®] II

Target group and requirements

Target group for this brochure

- Customers with MAN fleet and their own workshop

Requirements of long-distance data transmission

- Requirements for data transfer ISDN (preferably) or analog connection with data capability. In exceptional cases an ISDN or analog main terminal is necessary. (while data transfer is in progress the usual telephone costs for the country will be run up)

ISDN connection:



Analog connection:



MAN-cats[®] II

Information sources

Information on ordering MAN-cats[®] II

For further information please contact your MAN partner.

Internet

After Sales Portal: <https://portal.mn.man.de/aftersales/de/index.jsp>





MAN Nutzfahrzeuge AG | Postfach 50 06 20 | D-80976 München
www.man-nutzfahrzeuge.de

VNSWE | MST 01/2004 | BP0000GB

Text and pictures unbinding. We reserve the right to make changes due to technical progress.